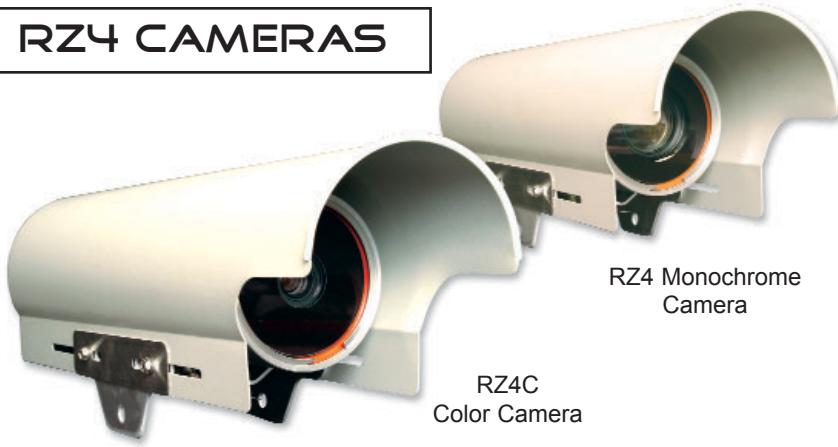


Vantage®

RZ4 CAMERAS



Vantage® RZ4 Cameras offer the best all-round performance for the detection of vehicles in a variety of lighting and weather conditions. The camera has been optimized to provide a clear and crisp video image that is used as the input to Vantage video detection systems. In contrast to other CCTV type cameras, the Vantage camera delivers a constant and regulated video signal that is easily processed by Vantage video detection systems.

The camera assembly with its integral power supply is housed and sealed in a weather-resistant enclosure specifically designed for outdoor use. To prevent sun glare and to protect the housing from the weather elements, the camera is fitted with a moveable sunshield to allow the camera to be pointed in any direction. The sunshield also extends beyond the front of the camera housing and incorporates an integrated drip rail to protect the housing glass from rain and the formation of icicles that could hinder the view of the camera.

The camera housing incorporates an adjustable mounting bracket that allows the camera to be positioned correctly. The mounting bracket is pre-drilled for easy attachment to a variety of poles and other street fixtures. All connectors for cables are located at the back of the camera housing making installation and maintenance quick and simple.

The camera is virtually maintenance-free. The camera glass is treated to minimize the attraction of dirt and dust. To prevent the build up of condensation and ice on the lens glass, the camera housing is fitted with a heater that ensures a clear view at all times. Iteris offers the Vantage Camera with a three year limited warranty.

The RZ4 Cameras have been optimized for use in outdoor conditions specifically for the viewing of traffic flows at the intersection, on the highway, on bridges or in tunnels. The camera's image is normally adjusted to view up to 4 or 5 lanes of traffic. From this image, the Vantage video detection processor can be configured to detect the presence, motion, speed and classification of vehicles. Other uses for video detection include: Ramp Metering, Pedestrian Detection, Red Light Enforcement as well as Bicycle Detection. It all depends upon where and how you position the Vantage Camera.

FEATURES

- Camera
 - Color or monochrome image sensors available
 - Latest CCD sensing element and DSP technology
 - Electronic shutter and auto iris lens (RZ4C)
 - Auto focus with manual override (RZ4C)
- Camera Housing
 - Sealed housing to IP67 specification
 - Integrated adjustable sunshield
 - Chemically coated front glass
 - Auto-sensing power supply - 115/230 VAC 50/60 Hz
 - Internal heater with proportional power control
 - Integrated mounting bracket
 - Separate connectors for power and video
- Options
 - DC power for solar or battery applications
 - 2.4Ghz wireless operation
 - Junction Box adaptor for field terminations

BENEFITS

- Optimized for outdoor traffic situations that aids video detection
- Integrated mounting brackets reduce installation and setup time
- Connectors located on back plate simplifies cable connection
- Coated front glass repels dirt and water that helps to reduce maintenance cleaning
- Proportional power controlled internal heater prevents ice and condensation resulting in improved video detection performance in adverse weather conditions.

ITERIS®

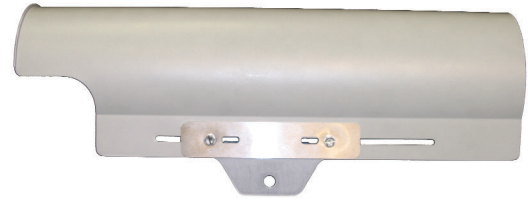




VANTAGE LAM OPTION

The LAM (Lens Adjustment Module) is an easy-to-use hand held device that allows field adjustment of the camera settings. The unit is available in NTSC or PAL format, and can be used with or without a monitor.

The RZ4C camera produces color or monochrome images of roadway scenes for detection of vehicle traffic. Camera is mounted tilted down 20°, or more, below horizontal to avoid direct view of sun or horizon.



SPECIFICATIONS		
	Color RZ4 Camera	Monochrome RZ4 Camera
IMAGER	768 x 494 effective pixels 470 TV lines minimum Automatic white balance >50 dB S/N ratio 1.0 lux @f1.8 typical sensitivity	510 x 494 effective pixels 380 TV lines minimum >56 dB S/N ratio .2 lux @f1.4 typical sensitivity
LENS	Focal length and focus adjustable through connector at rear of housing for a horizontal field of view ranging from 5.4° wide to 50.7° wide	Focal length and focus adjustable through connector at rear of housing for a horizontal field of view ranging from 5.8° wide to 44.3° wide
CONNECTIONS	BNC connector for video at rear of housing. Power connector for line power, DC input, neutral, and safety ground at rear of housing.	
PHYSICAL		
WEIGHT	5.7 pounds (2.6 Kg), including camera, lens, housing, sunshield, and mounting bracket	
DIMENSIONS	17" (43.2cm) long x 5" (12.7cm) diameter (without mounting bracket)	
ENVIRONMENT		
TEMPERATURE	-31°F to +140°F (-35°C to +60°C)	
HUMIDITY	0% to 100%	
VIBRATION	0.5G, 3 axes, 5-30 Hz	
POWER		
STANDARD	115/230 VAC (45W max.) 50/60 Hz	
OPTION	12V DC (30W max.)	



MERGING INNOVATION, TECHNOLOGY & SERVICE

736 Federal Street, Suite 2312 • Davenport, Iowa 52803
 p: (563) 323.0009 • f: (563) 323.8256 • browntraffic.com



Information furnished by Iteris is believed to be accurate and reliable. However, Iteris does not warranty the accuracy, completeness, or fitness for use of any of the information furnished. No license is granted by implication or otherwise under any intellectual property. Specifications subject to change without notice.

